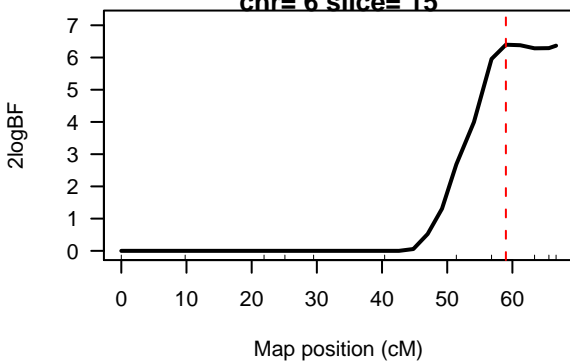
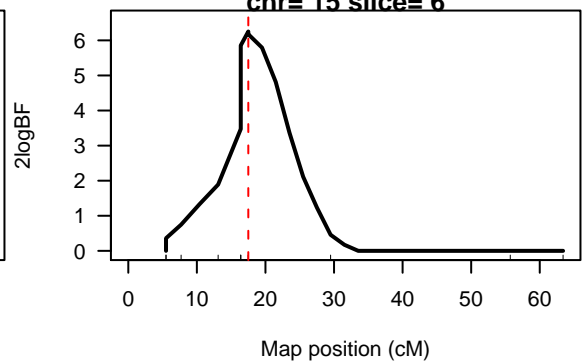


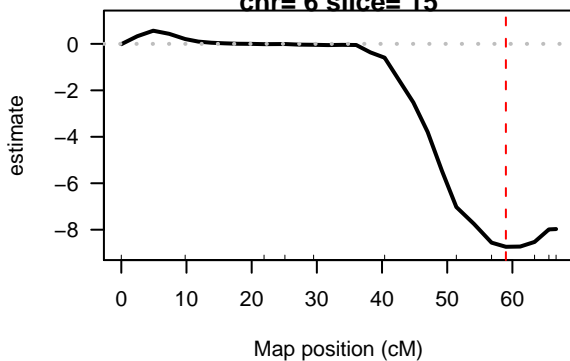
**2logBF of for epistasis**  
**chr= 6 slice= 15**



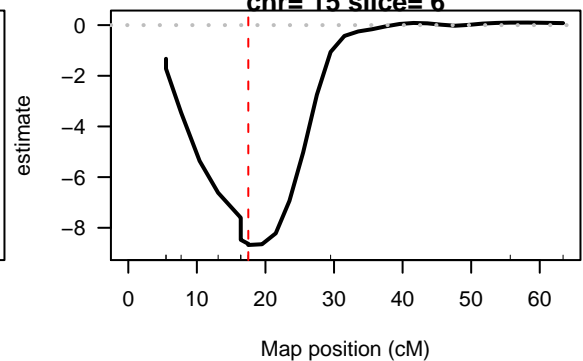
**2logBF of for epistasis**  
**chr= 15 slice= 6**



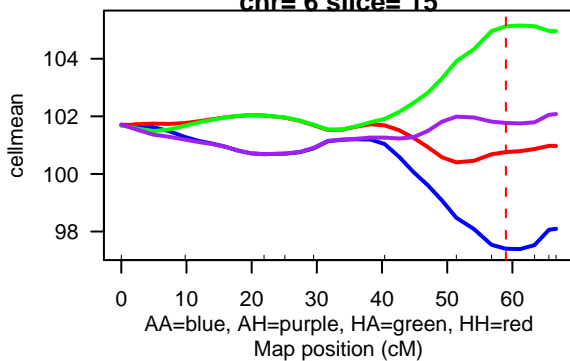
**estimate of for epistasis**  
**chr= 6 slice= 15**



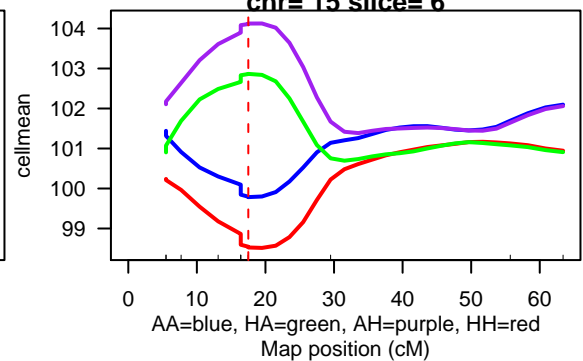
**estimate of for epistasis**  
**chr= 15 slice= 6**



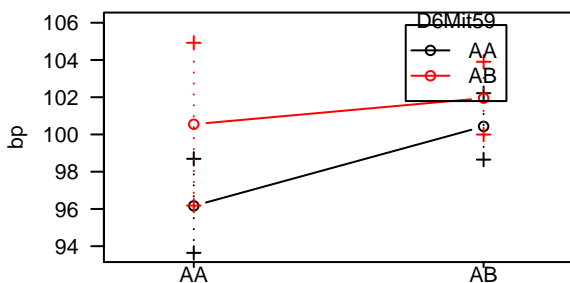
**cellmean of for effects**  
**chr= 6 slice= 15**



**cellmean of for effects**  
**chr= 15 slice= 6**



**chr 6, chr 15**



**chr 15, chr 6**

