

paleofire: an R package to analyse sedimentary charcoal records from the Global Charcoal Database to reconstruct past biomass burning

Blarquez, Olivier^{a,b,*}, Vannière, Boris^c, Marlon, Jennifer R.^d, Daniau, Anne-Laure^e, Power, Mitchell J.^f, Brewer, Simon^g, Bartlein, Patrick J.^h

^a*Centre d'étude de la Forêt, Université du Québec à Montréal, Montréal, Québec, Canada*

^b*Natural Sciences and Engineering Research Council of Canada Industrial Chair in Sustainable Forest Management, Forest Research Institute, Université du Québec en Abitibi-Témiscamingue, Rouyn-Noranda, Québec, Canada*

^c*Centre National de la Recherche Scientifique (CNRS), UMR Chrono-Environnement, Besançon, France*

^d*Yale School Forestry and Environmental Studies, Yale University, New Haven, Connecticut, USA*

^e*Centre National de la Recherche Scientifique (CNRS), Environnements et Paléoenvironnements Océaniques et Continentaux (EPOC), Unité Mixte de Recherche (UMR) 5805, Université de Bordeaux, Talence, France*

^f*Natural History Museum of Utah and Department of Geography, University of Utah, Salt Lake City, Utah, USA*

^g*Department of Geography, University of Utah, Salt Lake City, Utah, USA*

^h*Department of Geography, University of Oregon, Eugene, Oregon, USA*

Abstract

We describe a new R package, **paleofire**, for analysis and synthesis of charcoal time series, such as those contained in the Global Charcoal Database (GCD), that are used to reconstruct paleofire activity (past biomass burning). **paleofire** is an initiative of the Global Paleofire Working Group core team (www.gpwg.org), whose aim is to encourage the use of sedimentary charcoal series to develop regional-to-global syntheses of paleofire activity, and to enhance access to the GCD data by providing a common research framework. Currently, **paleofire** features are organized into three different parts related to (i) site selection and charcoal series extraction from the GCD; (ii) charcoal data transformation; and (iii) charcoal series compositing and synthesis. We provide a technical description of **paleofire** and describe some new implementations such as the circular block bootstrap procedure. We tested the software using GCDv3 data from eastern North America, and provide examples of interpreting results of regional and global syntheses.

Keywords: charcoal, fire, biomass burning, databases, R statistical language

[☆]paleofire package version 1.1.3

*Corresponding author

Email address: blarquez@gmail.com (Blarquez, Olivier)

Contents

1	Introduction	2
2	Global Charcoal Database to paleofire data synthesis	3
3	Technical description of paleofire	4
3.1	Site selection	4
3.2	Data transformation	5
3.3	Data synthesis and compositing	7
3.4	Confidence intervals	8
4	Results interpretations	10
5	Conclusion	11
6	Acknowledgements	11
7	References	11

1. Introduction

In the last decade, regional and global syntheses of sedimentary charcoal records have been used to examine broad-scale patterns in palaeofire activity (Carcaillet et al., 2002, Power et al., 2008, Daniau et al., 2012). The linkages among fire, climate, vegetation and humans at centennial-millennial timescales have likewise been examined using global and regional syntheses (Marlon et al., 2008, Ali et al., 2012). Syntheses of charcoal records can also aid the validation and calibration of fire simulations (Flannigan et al., 2001, Pechony and Shindell, 2009, Girardin et al., 2013, Brücher et al., 2014). Because fire influences ecosystems at all spatio-temporal scales (ranging from days to centuries and from microsites to biomes), a growing interest in paleofire research has emerged. Additionally, future wildfire regimes may have no analogues from recent decades, and so identifying reference conditions and baselines in the past has become crucial to projecting future wildfire activity (Girardin et al., 2013). Sedimentary charcoal series from individual sites are distributed worldwide, and are increasingly included in the Global Charcoal Database (Power et al., 2010, GCD), which provides the scientific community a global charcoal dataset for research and archiving for sedimentary records of fire (the GCD is available at <http://gpwg.org/gpwgdb.html>). Syntheses of spatio-temporal changes in fire at global (Marlon et al., 2008, Power et al., 2008, Daniau et al., 2012, Marlon et al., 2013) and regional (Marlon et al., 2009, Mooney et al., 2011, Vanni re et al., 2011, Power et al., 2013) scales were obtained by applying several analytical steps implemented by a set of Fortran programs (Bartlein, P. J.

unpublished). Because these statistical methods are not easily usable or modifiable, the Global Paleofire Working Group core team has developed a package using the open-source R statistical programming language. The new package should increase accessibility to paleofire data while providing the fire-science community with new analytical tools that include and extend the previously used functions for GCD data extraction and statistical analysis.

The aim of this paper is to describe the **paleofire** R package that facilitates the analysis of charcoal records contained in the GCD. The **paleofire** package functions are organized into three parts: (i) GCD site selection and data extraction using a variety of criteria (geographic, sedimentary, etc.), (ii) charcoal data transformation, including re-scaling, single-record variance homogenization and nonparametric trend estimation and (iii) data synthesis, including confidence limit estimation using resampling procedures.

2. Global Charcoal Database to paleofire data synthesis

The **paleofire** package works in conjunction with the **GCD** R package that contains a simplified version of the charcoal dataset in order to accommodate the different update frequency between the **paleofire** package (frequent updates) and the Global Charcoal Database (infrequent updates). The **checkGCDversion()** function can be used to determine whether the **GCD** data package is current. If it is not, the function asks whether the user wants to update the data. The minimal package version numbers required for running the examples presented in this study are 1.1.3 and 3.0.3 for the **paleofire** and **GCD** packages respectively. Backward compatibility will be ensured from these versions.

As of November 30, 2014, the **GCD** v3.0.3 contains a total of 736 charcoal records and is provided as a Microsoft Access database available at <http://gpwg.org>. The **GCD** data package is a simplified and reduced version of the **GCD** database. The package consists of two data frames containing site metadata and charcoal data. The two data frames combine several tables from the **GCD** in order to simplify analysis in R, and exclude chronology development information, such as radiocarbon dates; these will likely be added however in future releases. Although most analyses in **paleofire** may use data directly from the dataframes in the **GCD** package, it is also possible to analyze user-defined database extracts or other charcoal series not in the database using the **pfAddData** function. There is currently no mechanism for permanently adding data to the **GCD** package automatically; interested contributors should contact the GPWG instead. The site metadata is accessible by typing the **data(paleofiresites)** command at the R prompt. This data frame provides a unique identifier for each site in the **id.site** column and associated metadata such as chronological, sedimentary or geographical information.

The raw charcoal data are accessible with the **data(paleofiredata)** command. The data consist of a seven column data frame containing: (i) site unique identifier, (ii) sample depth, (iii) sample age, (iv) sample charcoal value, (v) sample charcoal unit, (vi) extraction method (sieved charcoal, pollen slide charcoals, etc.) and (vii) sample type unit (influx or concentration). The default setting

for the R package is to select the preferred units (e.g., concentration or influx values are typically preferred over charcoal-to-pollen ratios if both are available) used in previous analysis (see [Daniau et al., 2012](#) or [Power et al., 2008](#)), however **paleofire** allows one to analyse charcoal records with user-defined units or methods (e.g. sieved *vs* pollen slide charcoals, see `pfSiteSel` and `pfTransform` functions help for details).

3. Technical description of paleofire

Here we provide a technical description and several illustrative examples of **paleofire**. The **paleofire** package is written in the R scientific computing language (R Development Core Team, 2011) and was developed under the R 3.0.3 version but remains compatible with R $\geq 2.10.0$. The functions in **paleofire** are arranged into three groups associated with data selection, charcoal series transformation, and synthesis. We used the S3 method scheme to implement generic plotting and summary functions.

To present some of the **paleofire** capabilities, the examples below use charcoal series from Eastern North America. For additional examples and a detailed overview of individual functions, the reader is referred to the online help available at <http://cran.r-project.org/web/packages/paleofire/paleofire.pdf>.

3.1. Site selection

Two functions are dedicated to site selection. The first one, `pfInteractive` requires users to interactively draw a polygon on a map to select sites with respect to their geographic location. The function returns a list object containing site names and identifiers that is further used in the following analysis steps and is called using `pfInteractive()`.

```
> #install.packages("paleofire",repo="http://cran.r-project.org")
> library(paleofire)
```

The `pfSiteSel` function is more versatile than `pfInteractive` and has arguments for a variety of user-defined criteria. In the example below we select charcoal series between 30° and 90° latitude and -100° and -50° longitude, and include only those with at least one geochronological (^{14}C or ^{210}Pb dating, tephra layer, etc.) control point each 2500 year.

```
> ID <- pfSiteSel(lat>30 & lat<90, long>-100 & long<(-50),
+               date_int<=2500)
> length(ID$id_site)
```

```
[1] 71
```

Seventy-one sites are selected and stored in the ID object of the class `pfSiteSel`. The summary function associated with the `pfSiteSel` object returns a table

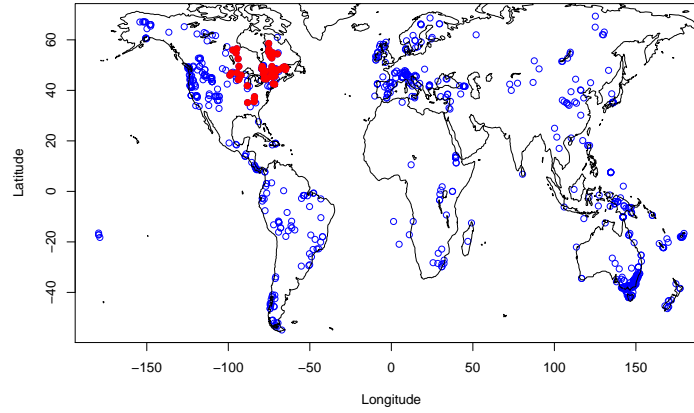


Figure 1: Location maps of selected North Eastern American charcoal sites from GCDv3 (a). The zoom argument was set to "world". Selected sites are displayed using filled red circles; unselected GCD sites are displayed using empty blue circles.

(Table SI1) containing site information, including geographic (latitude, longitude and elevation) and chronological descriptors (number of chronological control points, number of samples, minimum and maximum estimated ages). In the example below the `summary` function is applied to the `ID` object and the `pfSiteSel` function is used to select site records with at least 20 samples.

```
> sumID <- summary(ID)
> ID <- pfSiteSel(id_site %in% ID$id_site & num_samp>=20)
> length(ID$id_site)

[1] 57
```

The 57 selected sites can be plotted on a map using the generic `plot` function; a zoom level can be specified using the `zoom` argument. The use of this function is illustrated in the example below, which is used to construct Figure 1. The `plot` function may also be used to explore the sampling resolution of sites using the `type="chronology"` argument.

3.2. Data transformation

Charcoal values contained in the GCD can vary widely among and within sites due to multiple factors. For instance, variations in (absolute) charcoal abundances can be related to different analytical methods (i.e. sediment treatment; [Tinner and Hu, 2003](#)) as well as to unique physiographic site characteristics [Marlon et al. \(2006\)](#). Variations in charcoal values may also be linked to differences in the types of records (pollen slide charcoals, sieved charcoals, charcoal/pollen ratios, [Carcaillet et al. 2001](#)). Lastly, differences in the original

sample quantities (influx, concentration, percentage) could also contribute to variations in charcoal values. Consequently, transformation and standardization of different charcoal records is a highly recommended step in generating a synthesis. A methodology to standardize charcoal records was proposed by Power et al. (2008) and involved a three-step data transformation including a minimax data-rescaling, variance homogenization using Box and Cox (1964) data transformation, and a final rescaling to Z-scores. Using the `pfTransform` function these transformations are done on influx using the following command:

```
> TR1 <- pfTransform(ID, method=c("MinMax", "Box-Cox", "Z-Score"))
```

Note that by default the `pfTransform` function calculates influx for series whose data is given in concentrations, by multiplying concentrations by sediment vertical accretion rate ($cm.yr^{-1}$) calculated using the age-depth model for each record (the `QuantType="NONE"` argument can be passed to the `pfTransform` function for keeping original units but it is not recommended). The `method` argument may list single or multiple methods (that are computed in the same order as given in the function), relating to charcoal data transformation or smoothing. The distributions of charcoal values typically have long right tails, and can generally be easily transformed to a symmetrical “normal”-like distribution Higuera et al. (2011). The transformations we implemented include both the Box and Cox (1964) parametric power transformation technique (default method) and the modified Box-Cox modulus transformation, proposed by John and Draper (1980), which is known to more effectively produce normality in long tailed data, i.e. in the case of charcoal series data presenting numerous zero values. These are accessible through the `pfTransform` function using the `type=c("BoxCox1964", "JohnDraper")` argument.

The types of filtering (smoothing or compositing) techniques implemented here include running means, median, min, max, quantiles, locally weighted scatter plot smoother (LOESS) and smoothing splines; all these methods take an additional parameter giving the window width for computations (`RunWidth` argument) or the smoothing parameter in the case of the LOESS or the smoothing-spline methods (`span` argument). Associated to `pfTransform` users may choose to add their own data to the analysis using the `pfAddData` function that uses the CharAnalysis file type format (Higuera et al., 2009, freely available at <https://github.com/phiguera/CharAnalysis>), or any file containing charcoal quantities and associated depth and age information as input. In the following example we will add the charcoal data from Senici et al. (2013). The `BasePeriod` argument is used to set the period 200-4000 BP as a base period for the Z-score calculation (Power et al., 2008). Note that a minimax data-rescaling step was added after the Box-Cox transformation because Box-Cox transformed series are comparable only if they share identical λ values (Marlon et al., 2008).

```
> ## Add Ben lake and Small lake data to the
> # analysis (Senici et al., 2013)
> download.file(url="http://blarquez.com/public/data/data_cageo.zip",
+               destfile="data_cageo.zip")
```

```

> unzip("data_cageo.zip")
> mydata=pfAddData(files=c("Ben.csv", "Small.csv"),
+                  metadata="metadata.csv", type="CharAnalysis")
> ## Transform:
> TR2 <- pfTransform(ID, add=mydata, BasePeriod=c(200, 4000),
+                   method=c("MinMax", "Box-Cox", "MinMax", "Z-Score"))
> ## Delete downloaded files
> file.remove(c("Ben.csv", "Small.csv", "data_cageo.zip", "metadata.csv"))

```

3.3. Data synthesis and compositing

Synthesizing or compositing charcoal series typically involves pooling the different series in order to calculate the mean charcoal value (across sites) at each time step. This simple operation could be performed in different ways using the `pfComposite` function. Alternatively, a data-binning procedure can be used to calculate a composite curve. The binning sequence must be supplied in order to allow the `pfComposite` function to calculate the mean charcoal value for each series within each binning interval and then calculate the mean for all series. This can be achieved using arbitrary 500-year bin widths:

```

> COMP1 <- pfComposite(TR2, binning=TRUE,
+                      bins=seq(from=0, to=11000, by=500))

```

This approach (`pfComposite`) is equivalent to [Power et al. \(2008\)](#) but `paleofire` also implements the methods proposed by [Marlon et al. \(2008\)](#) and [Daniau et al. \(2012\)](#), which consists of a two-stage smoothing method (`pfCompositeLF`). The procedure implemented in the package was slightly modified compared to [Marlon et al. \(2008\)](#) but returns highly comparable results (see SI for details). The two-stage smoothing method first "pre-bins" individual charcoal series using non-overlapping bins in order to ensure that records with high sample resolution do not have a disproportionate influence on the composite record, and that data will be not interpolated for records with a lower resolution. The second step smooths the pre-binned series using a locally-weighted scatter plot smoother "LOWESS" ([Cleveland, 1979](#)) with a pre-defined constant bandwidth (half-width) given in the years (`hw` argument). In the following example we will pre-bin the data with 20 year non-overlapping bins and a LOWESS smoother with a 500 year window half width (i.e., a 1000-year smoothing window).

```

> COMP2 <- pfCompositeLF(TR2, tarAge=seq(-50, 12000, 20),
+                        binhw=10, hw=500, nboot=100)

```

The `tarAge` argument is used to define the center of each bin in the prebinning procedure (`binhw` being the prebinning bin half width) and the ages where the LOWESS estimation takes place.

3.4. Confidence intervals

Option A

The confidence intervals for the `pfComposite` function are calculated by bootstrap resampling of the binned charcoal series and calculation of the mean for each bin n times, using the argument `nboot` to choose n value (by default `nboot=1000`). For the `pfCompositeLF` function confidence intervals are calculated by bootstrap resampling the prebinned series (as opposed to individual samples) and then applying the LOWESS curve fitting. This operation is repeated n times and is defined using the argument `nboot`. The confidence intervals are estimated based on the distribution of the bootstrap replicates.

Objects of the class `pfComposite` and `pfCompositeLF` can be plotted using the generic `plot` function. Confidence intervals are specified using the `conf` argument. The `add="sitenum"` plot function argument can be used to display the number of charcoal sites contributing to each composite value at each time step (Figure 2).

```
> par(mfrow=c(2,1))
> plot(COMP1,conf=c(0.025,0.975),main="(a)")
> plot(COMP2,conf=c(0.05,0.95),main="(b)")
```

Option B

Bootstrapped confidence intervals are usually calculated by resampling the charcoal series with replacement in order to test the sensitivity of the composite record to individual series (or sites, option A). However, because the values in charcoal series are autocorrelated, testing the significance of their temporal variations is not straightforward. Block bootstrap has been proposed to test the significance of changes in stationary time series (Kunsch, 1989). Here we implemented a new procedure in the `paleofire` package of "moving" or "circular" block bootstrap, which consists of splitting each charcoal series into $n - b + 1$ overlapping blocks of data, where n is sample size and b the block size. These blocks are randomly selected (with replacement) to reconstruct new individual charcoal series that are in turn used to estimate the confidence intervals around the charcoal series composite mean. This procedure may dampen the long-term trends in data, particularly if individual sites record opposing trends. If the observed trend does not exceed the confidence intervals, then there the composite values at that time are not greater than by chance if records are not at all synchronized. However, a composite curve not exceeding the confidence intervals does not exclude the occurrence of important trends in the composite series. This procedure is rather used for testing the significance of local minima or maxima in the composite time series.

The optimal block size for a given series is given by: $b = 2 \times (-1/\log(\rho))$, where ρ is the lag one autocorrelation coefficient of that series (Adams et al., 2003).

The circular block bootstrap method is commonly used in Superposed Epoch Analysis, a compositing technique that aims to find the response of a variable to one or multiple particular events, for instance insect outbreaks (Nola et al., 2006, e.g.) or fires (Swetnam, 1993, e.g.) using dendrochronological series or

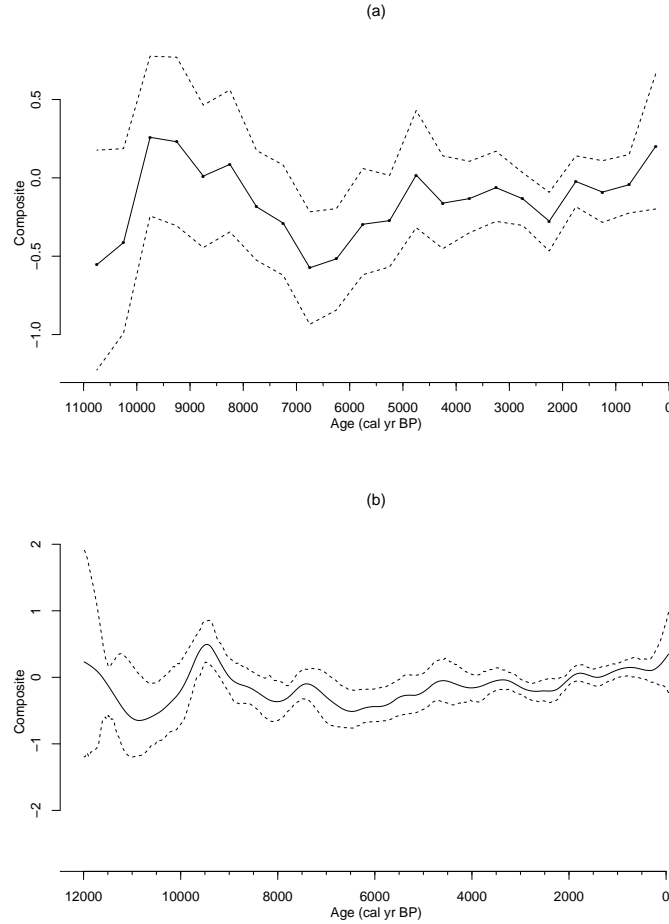


Figure 2: Composite charcoal series for North Eastern American sites. (a) Composite values and associated confidence intervals using the `pfComposite` function. (b) Composite values and associated confidence intervals using the `pfCompositeLF` function (b). Dashed lines correspond to the 97.5th, 2.5th and 95th, 0.5th percentiles respectively.

paleoecological proxy series (Blarquez and Carcaillet, 2010). The R implementation follows the Matlab SEA function available at <http://blarquez.com> that was inspired by Adams et al. (2003) methodology. The `pfCircular` function is called using the following command and returns an object of class `pfCircular` that can be plotted using the generic plot function:

```
> circboot <- pfCircular(COMP1, b=NULL, nboot=100,
+                        conf=c(0.005,0.025,0.975,0.995))
> plot(circboot)
```

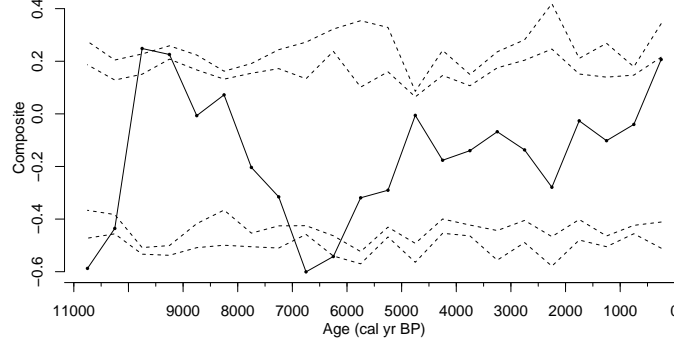


Figure 3: Composite mean of charcoal series for Eastern North American sites (black line) and associated confidence intervals estimated using a circular block bootstrap procedure (dashed lines). Dashed lines correspond to the 99.5th, 97.5th, 2.5th and 0.5th bootstrapped percentiles, respectively.

The `b=NULL` argument indicates that the block size is automatically calculated for each series using the formulation above.

4. Results interpretations

On figure 2, we see that before c. 10,500 cal BP, the two approaches (simple binning and LOWESS fitting) give different results. Because the `pfCompositeLF` used a local regression approach with a bandwidth of 1000 years, composite edges (-50-1050 and 11000-12000 cal BP periods) may suffer from bias (edge effect), however this bias should be minimal here and reducing his effect does not change the results significantly (results not shown of for an application of the minimum-slope correction approach of Mann (2004, 2008), which is implemented in the `pfCompositeLF` function, see the help for usage details). Additionally the number of sites contributing to the overall composite curve before 10,500 cal BP is low (< 30 sites) and thus the curve should be interpreted with caution. The period from 10,500 to 8000 cal BP and from c. 200 cal BP to present, displays large positive anomalies in composite values for both approaches. On Figure 3 we see that the positive charcoal composite anomalies during the period 9000-10 000 cal BP and negative ones during the periods 6000-7000 and 10,500-12,000 are significantly different from a 12,000 year linear trend and exceed the 95th confidence interval range given by the circular block bootstrap procedure (Fig 3). However, large classical (site resampling based) confidence intervals during the 10,500-12,000 cal BP period indicate that the response is not homogeneous among the charcoal series (Fig 2a-b). The negative composite values at 6000-7000 cal BP are associated with confidence intervals that are narrower compared

to previous periods indicating that the within-sites response is relatively homogeneous and thus likely related to forcing factors occurring at a broad spatial scale (e.g. climate).

5. Conclusion

We have presented the `paleofire` package that allows the paleofire community to easily interrogate data contained within the Global Charcoal Database and to perform the analytical steps required to produce a regional charcoal synthesis using a few simple commands. The `paleofire` package introduces some new analyses such as the circular block-bootstrap procedure and various new charcoal data-transformation techniques and background-estimation procedures. The package also provides an integrated research framework linking the GCD to the open-source R statistical language. The implemented features are likely to be extended by future releases and new implementations that will increase `paleofire` capabilities, such as spatio-temporal clustering, which is currently in development. The stable release of `paleofire` is available from the CRAN website but users may choose to test development releases from Git (<https://github.com/paleofire/paleofire>). We hope `paleofire` will be of broad interest to fire scientists and ecosystem managers, and we encourage its use to perform original research and welcome any development requests and feedback.

6. Acknowledgements

We wish to thank all data contributors to the GCD, PAGES workshop funding, the UMR Chrono-Environnement, the University of Franche-Comté and the Région of Franche-Comté for supporting the Global Paleofire Working Group workshop in Frasne (October 2013). OB was supported by a postdoctoral grant from the Fonds Québécois de la Recherche sur la Nature et les Technologies and the FONCER program. JM was supported by NSF grant EF-1241870.

7. References

- Adams, J. B., Mann, M. E., Ammann, C. M., 2003. Proxy evidence for an El Nino-like response to volcanic forcing. *Nature* 426 (6964), 274–278, ISI Document Delivery No.: 744YQ Times Cited: 50 Cited Reference Count: 30.
- Ali, A. A., Blarquez, O., Girardin, M. P., Hély, C., Tinquaut, F., El Guellab, A., Valsecchi, V., Terrier, A., Bremond, L., Genries, A., Gauthier, S., Bergeron, Y., 2012. Control of the multi-millennial wildfire size in boreal North America by spring climatic conditions. *Proceedings of the National Academy of Sciences of the United States of America* 109, 20966–20970.
- Blarquez, O., Carcaillet, C., 2010. Fire, fuel composition and resilience threshold in subalpine ecosystem. *PLOS ONE* 5 (8), e12480.

- Box, G. E., Cox, D. R., 1964. An analysis of transformations. *Journal of the Royal Statistical Society. Series B (Methodological)* 26, 211–252.
- Brücher, T., Brovkin, V., Kloster, S., Marlon, J., Power, M., 2014. Comparing modelled fire dynamics with charcoal records for the holocene. *Climate of the Past* 10 (2), 811–824.
- Carcaillet, C., Almquist, H., Asnong, H., Bradshaw, R., Carrion, J., Gaillard, M., Gajewski, K., Haas, J., Haberle, S., Hadorn, P., 2002. Holocene biomass burning and global dynamics of the carbon cycle. *Chemosphere* 49 (8), 845–863.
- Carcaillet, C., Bouvier, M., Fréchette, B., Larouche, A., Richard, P., 2001. Comparison of pollen-slide and sieving methods in lacustrine charcoal analyses for local and regional fire history. *The Holocene* 11, 467–476.
- Cleveland, W. S., 1979. Robust locally weighted regression and smoothing scatterplots. *Journal of the American statistical association* 74 (368), 829–836.
- Daniau, A. L., Bartlein, P. J., Harrison, S. P., Prentice, I. C., Brewer, S., Friedlingstein, P., Harrison-Prentice, T. I., Inoue, J., Izumi, K., Marlon, J. R., Mooney, S., Power, M. J., Stevenson, J., Tinner, W., Andri, M., Atanassova, J., Behling, H., Black, M., Blarquez, O., Brown, K. J., Carcaillet, C., Colhoun, E. A., Colombaroli, D., Davis, B. A. S., D’Costa, D., Dodson, J., Dupont, L., Eshetu, Z., Gavin, D. G., Genries, A., Haberle, S., Hallett, D. J., Hope, G., Horn, S. P., Kassa, T. G., Katamura, F., Kennedy, L. M., Kershaw, P., Krivonogov, S., Long, C., Magri, D., Marinova, E., McKenzie, G. M., Moreno, P. I., Moss, P., Neumann, F. H., Norström, E., Paitre, C., Rius, D., Roberts, N., Robinson, G. S., Sasaki, N., Scott, L., Takahara, H., Terwilliger, V., Thevenon, F., Turner, R., Valsecchi, V. G., Vannière, B., Walsh, M., Williams, N., Zhang, Y., 2012. Predictability of biomass burning in response to climate changes. *Global Biogeochemical Cycles* 26 (4), GB4007.
- Flannigan, M., Campbell, I., Wotton, M., Carcaillet, C., Richard, P., Bergeron, Y., 2001. Future fire in Canada’s boreal forest: paleoecology results and general circulation model-regional climate model simulations. *Canadian Journal of Forest Research* 31 (5), 854–864.
- Girardin, M. P., Ali, A. A., Carcaillet, C., Blarquez, O., Hély, C., Terrier, A., Genries, A., Bergeron, Y., 2013. Efficacy of vegetation changes to limit boreal wildfire activity in a warmer climate. *New Phytologist* 199, 1001–1011.
- Higuera, P. E., Brubaker, L. B., Anderson, P. M., Hu, F. S., Brown, T. A., 2009. Vegetation mediated the impacts of postglacial climate change on fire regimes in the south-central brooks range, alaska. *Ecological Monographs* 79 (2), 201–219.
- Higuera, P. E., Gavin, D. G., Bartlein, P. J., Hallett, D. J., 2011. Peak detection in sediment–charcoal records: impacts of alternative data analysis methods

- on fire-history interpretations. *International Journal of Wildland Fire* 19 (8), 996–1014.
- John, J., Draper, N., 1980. An alternative family of transformations. *Applied Statistics* 29, 190–197.
- Kunsch, H. R., 1989. The jackknife and the bootstrap for general stationary observations. *The Annals of Statistics* 17 (3), 1217–1241.
- Mann, M. E., 2004. On smoothing potentially non-stationary climate time series. *Geophysical Research Letters* 31 (7), L07214.
- Mann, M. E., 2008. Smoothing of climate time series revisited. *Geophysical Research Letters* 35 (16), L16708.
- Marlon, J., Bartlein, J., Carcaillet, C., Gavin, D., Harrison, S., Higuera, P., Joos, F., Power, M., Prentice, I. C., 2008. Climate and human influences on global biomass burning over the past two millennia. *Nature Geoscience* 1, 697–702.
- Marlon, J., Bartlein, P., Walsh, M., Harrison, S., Brown, K., Edwards, M., Higuera, P., Power, M., Anderson, R., Briles, C., 2009. Wildfire responses to abrupt climate change in North America. *Proceedings of the National Academy of Sciences* 106 (8), 2519–2524.
- Marlon, J., Bartlein, P. J., Whitlock, C., 2006. Fire-fuel-climate linkages in the northwestern USA during the Holocene. *The Holocene* 16 (8), 1059–1071.
- Marlon, J. R., Bartlein, P. J., Daniau, A.-L., Harrison, S. P., Maezumi, S. Y., Power, M. J., Tinner, W., Vanni  re, B., 2013. Global biomass burning: A synthesis and review of Holocene paleofire records and their controls. *Quaternary Science Reviews* 65, 5–25.
- Mooney, S., Harrison, S., Bartlein, P., Daniau, A.-L., Stevenson, J., Brownlie, K., Buckman, S., Cupper, M., Luly, J., Black, M., 2011. Late Quaternary fire regimes of Australasia. *Quaternary Science Reviews* 30 (1), 28–46.
- Nola, P., Morales, M., Motta, R., Villalba, R., 2006. The role of larch budmoth (*Zeiraphera diniana* Gn.) on forest succession in a larch (*Larix decidua* Mill.) and Swiss stone pine (*Pinus cembra* L.) stand in the Susa Valley (Piedmont, Italy). *Trees-Structure and Function* 20 (3), 371–382.
- Pechony, O., Shindell, D., 2009. Fire parameterization on a global scale. *Journal of Geophysical Research: Atmospheres* (1984–2012) 114 (D16).
- Power, M., Marlon, J., Bartlein, P., Harrison, S., 2010. Fire history and the Global Charcoal Database: a new tool for hypothesis testing and data exploration. *Palaeogeography, Palaeoclimatology, Palaeoecology* 291 (1), 52–59.

- Power, M., Marlon, J., Ortiz, N., Bartlein, P., Harrison, S., Mayle, F., Bal-
louché, A., Bradshaw, R., Carcaillet, C., Cordova, C., Mooney, S., Moreno,
P., Prentice, I., Thonicke, K., Tinner, W., Whitlock, C., Zhang, Y., Zhao, Y.,
Ali, A., Anderson, R., Beer, R., Behling, H., Briles, C., Brown, K., Brunelle,
A., Bush, M., Camill, P., Chu, G., Clark, J., Colombaroli, D., Connor, S.,
Daniau, A. L., Daniels, M., Dodson, J., Doughty, E., Edwards, M., Finsinger,
W., Foster, D., Frechette, J., Gaillard, M. J., Gavin, D., Gobet, E., Haberle,
S., Hallett, D., Higuera, P., Hope, G., Horn, S., Inoue, J., Kaltenrieder, P.,
Kennedy, L., Kong, Z., Larsen, C., Long, C., Lynch, J., Lynch, E., Mc-
Glone, M., Meeks, S., Mensing, S., Meyer, G., Minckley, T., Mohr, J., Nel-
son, D., New, J., Newnham, R., Noti, R., Oswald, W., Pierce, J., Richard,
P., Rowe, C., Sanchez Goñi, M., Shuman, B., Takahara, H., Toney, J., Tur-
ney, C., Urrego-Sanchez, D., Umbanhowar, C., Vandergoes, M., Vanniere, B.,
Vescovi, E., Walsh, M., Wang, X., Williams, N., Wilmshurst, J., Zhang, J.,
2008. Changes in fire regimes since the Last Glacial Maximum: an assessment
based on a global synthesis and analysis of charcoal data. *Climate Dynamics*
30 (7), 887–907.
- Power, M., Mayle, F., Bartlein, P., Marlon, J., Anderson, R., Behling, H.,
Brown, K., Carcaillet, C., Colombaroli, D., Gavin, D., 2013. Climatic control
of the biomass-burning decline in the Americas after AD 1500. *The Holocene*
23 (1), 3–13.
- Senici, D., Lucas, A., Chen, H. Y. H., Bergeron, Y., Larouche, A., Brossier,
B., Blarquez, O., Ali, A. A., 2013. Multi-millennial fire frequency and tree
abundance differ between xeric and mesic boreal forests in central Canada.
Journal of Ecology 101, 356–367.
- Swetnam, T. W., 1993. Fire history and climate change in giant sequoia groves.
Science 262 (5135), 885–889.
- Tinner, W., Hu, F. S., 2003. Size parameters, size-class distribution and area-
number relationship of microscopic charcoal: relevance for fire reconstruction.
The Holocene 13 (4), 499–505.
- Vannière, B., Power, M. J., Roberts, N., Tinner, W., Carrión, J., Magny,
M., Bartlein, P., Colombaroli, D., Daniau, A., Finsinger, W., 2011. Circum-
Mediterranean fire activity and climate changes during the mid-Holocene en-
vironmental transition (8500-2500 cal. BP). *The Holocene* 21 (1), 53–73.